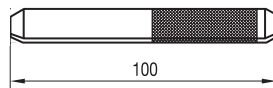
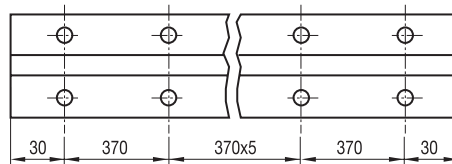
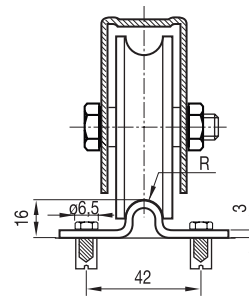


**Rail atornillar. Zincado / INOX**

Rail à visser. Zingué / INOX

Rail de aparafusar. Zincado / INOX

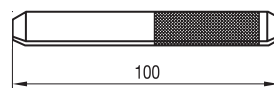
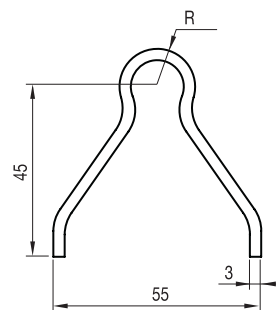
Perno unión  
80-233 o 80-234

Canal	R	Material	ø	L	Kg.	Código	
U16	8	Acero/Acier/Aço	3.000	3.000	1.000	80-228/16	1
		Perno unión	9			80-233	1
U20	10	Acero/Acier/Aço	3.000	3.000	1.000	80-228	1
		INOX	3.000	3.000	1.000	80-228/I	1
		Perno unión	12			80-234	1

**Rail empotrar. Zincado**

Rail à sceller. Zingué

Rail de embutir. Zincado

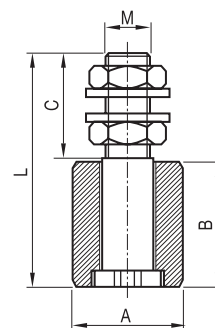
Perno unión  
80-233 o 80-234

Canal	R	Material	ø	L	Kg.	Código	
U16	8		3.000	3.000	500	80-229	1
		Perno unión	9			80-233	1
U20	10		3.000	3.000	1.000	80-230	1
		Perno unión	12			80-234	1

**Rodillo guía nylon**

Rouleau en nylon

Rolo guia nylon



ø A	B	C	L	M	Código	
25	40	32	74	M14	80-236	32
30	40	32	74	M14	80-238	30
35	40	40	90	M14	80-240	25
40	60	40	100	M16	80-242	20