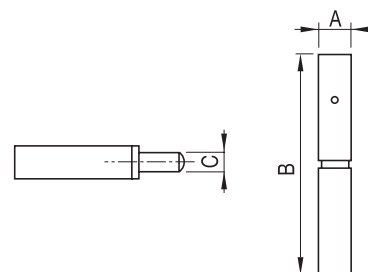



Pernio de 2 cuerpos. INOX

Paumelles deux corps. INOX

Perno 2 corpos. INOX

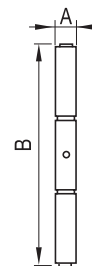
**Inox**


$\varnothing A$	B	$\varnothing C$	Código	
8	50	5	86-122/1	36
10	70	6	86-122/2	36
12	70	8	86-122/3	35
14	80	8	86-122/4	24
16	100	10	86-122/5	20
20	120	12	86-122/6	16
25	140	16	86-122/7	12

Pernio de 3 cuerpos. Acero

Paumelles trois corps. Acier

Perno 3 corpos. Aço

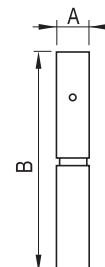



$\varnothing A$	B	Código	
16	100	86-124	25
18	110	86-128	20
20	120	86-132	20
25	150	86-136	8

Pernio con rodamiento axial. Zincado

Paumelles avec roulement axial. Zinguées

Perno com rolamento axial. Zincado



$\varnothing A$	B	Código	
20	120	86-138/20	15
25	130	86-138/25	12
30	140	86-138/30	10
35	150	86-138/35	8